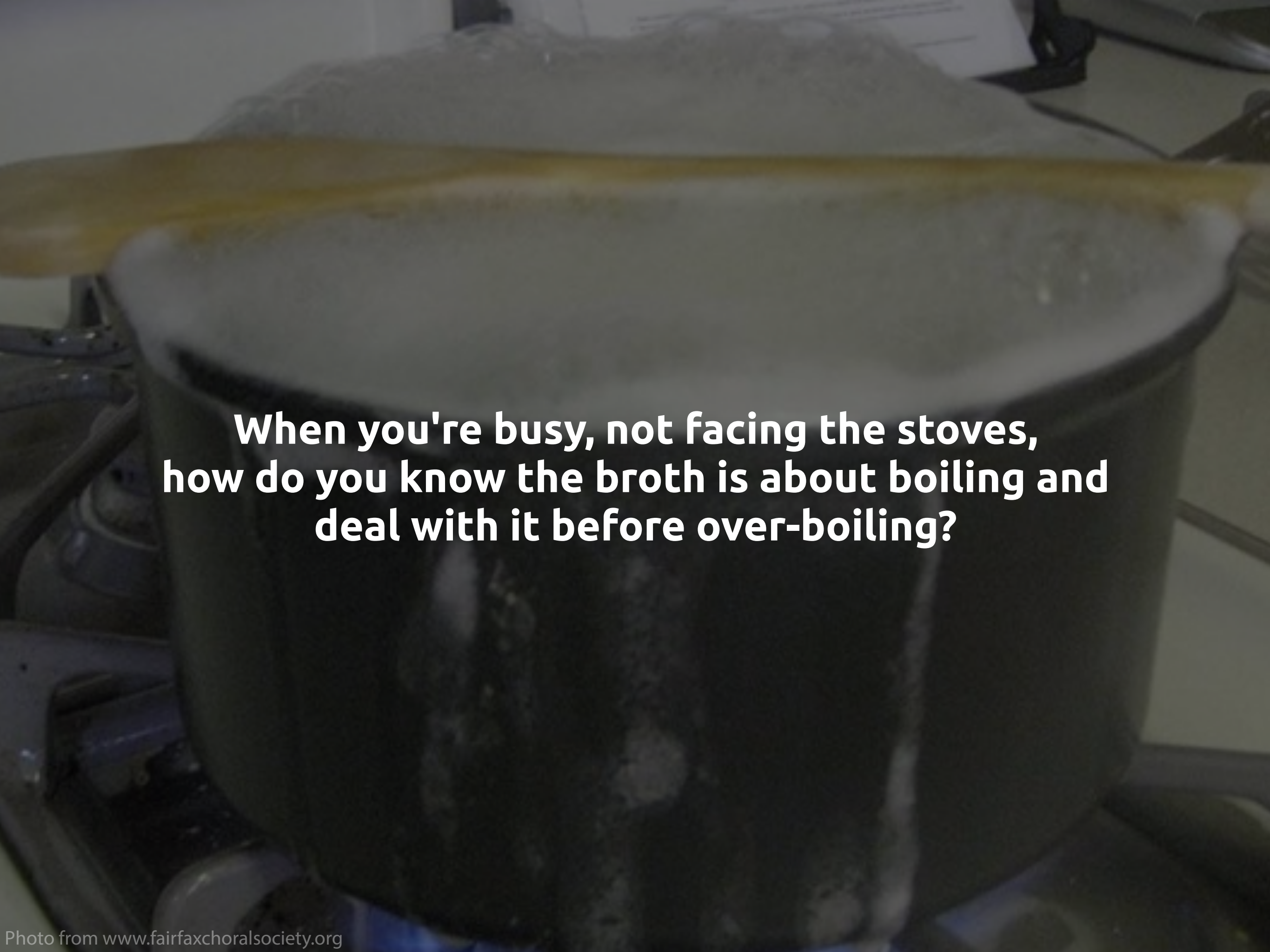


Mobile Media  
**Boil Monitor**

Shih-wen 'Angela' Chen

A large, dark-colored pot sits on a gas stove. The pot is filled with a light-colored liquid, likely broth, which is vigorously boiling, creating a thick layer of white foam on top. A long-handled wooden spoon rests across the top of the pot's lid. The background is slightly out of focus, showing a kitchen counter and some papers.

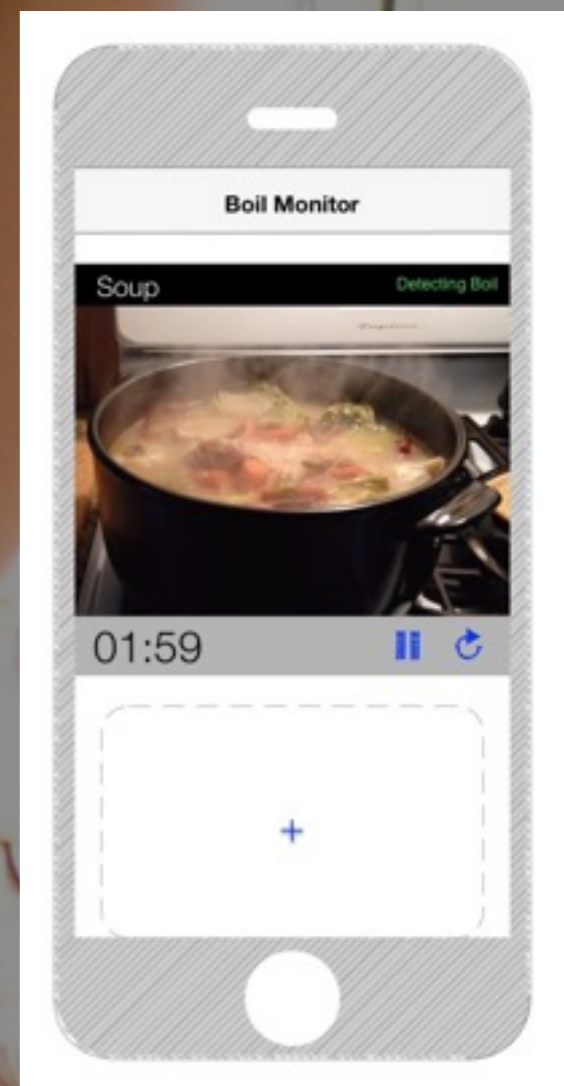
**When you're busy, not facing the stoves,  
how do you know the broth is about boiling and  
deal with it before over-boiling?**

A large, dark-colored pot sits on a gas stove burner. The pot is filled with water, which is boiling vigorously, creating a thick layer of white steam that rises from the top. The background is slightly blurred, showing a kitchen counter and some papers.

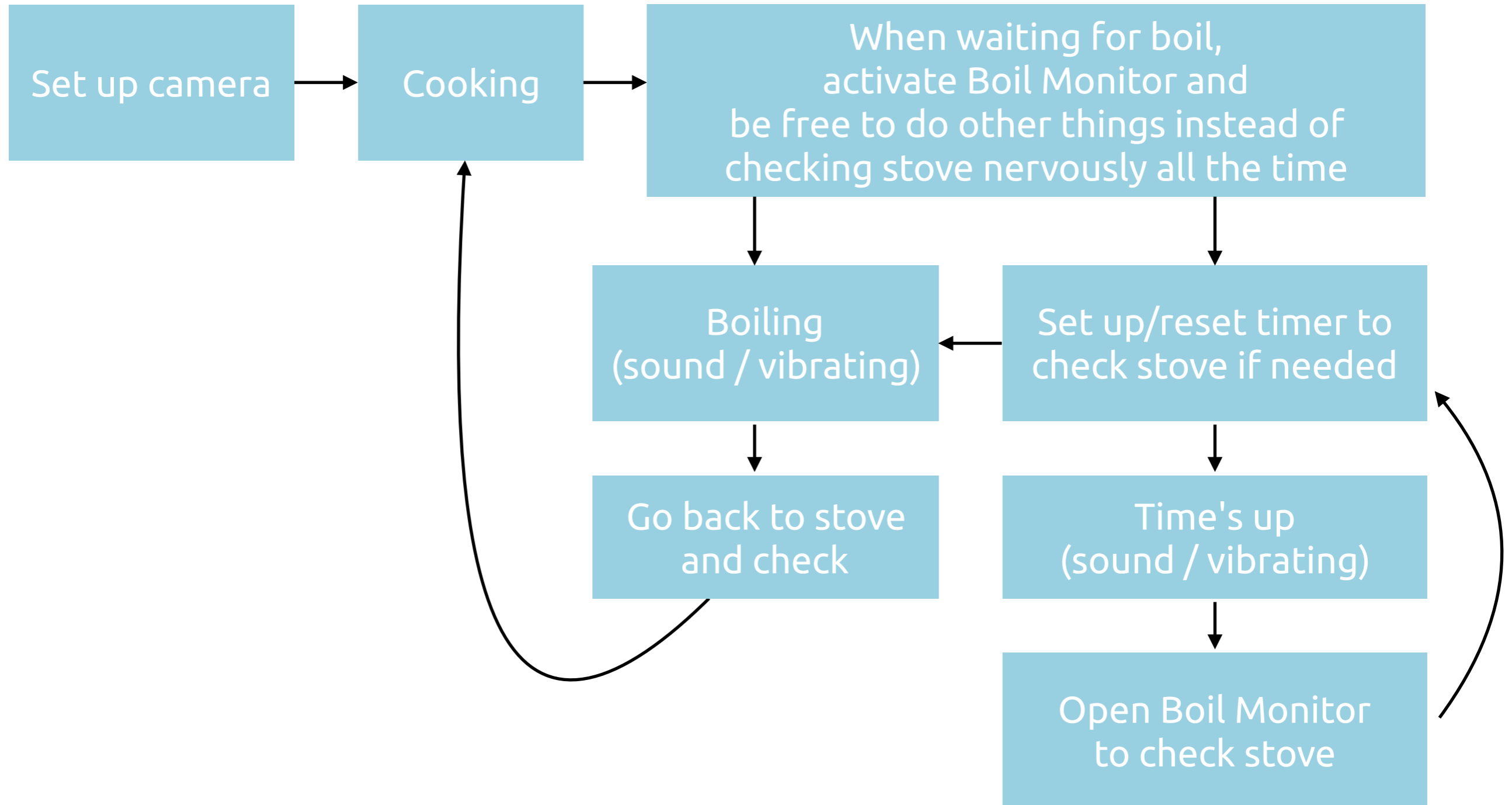
**Hear it.**

**But what if the extractor hoods are rumbling,  
you have to leave kitchen for a while,  
or you are hard of hearing?**

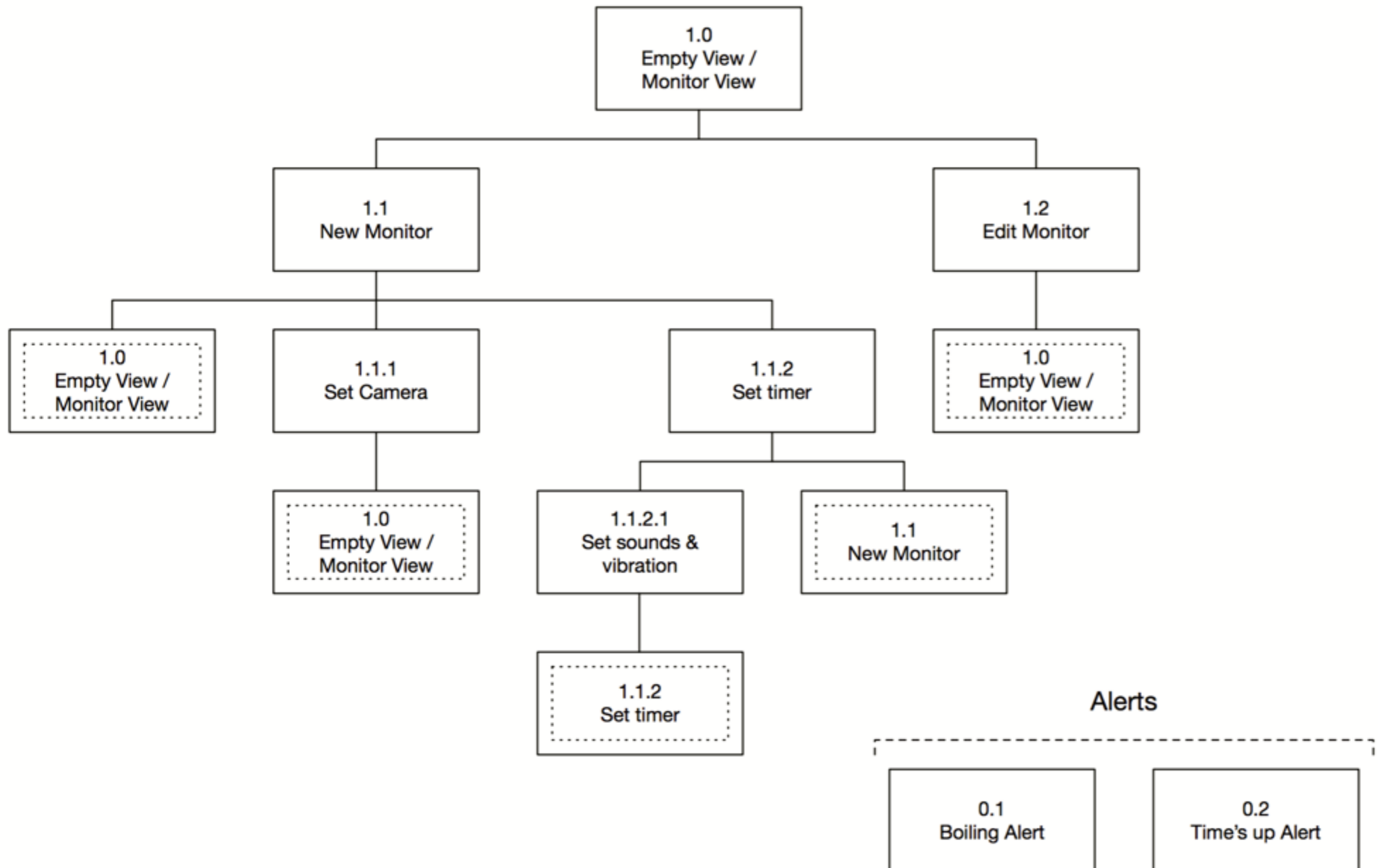
# Boil Monitor



# User flow



# Boil Monitor App Map



## Boil Monitor



Cancel

New Monitor

Done

Monitor 1

Camera Source

Camera 1 >



Boil Detect



Timer

2 mins >

< New

Camera Source

Done

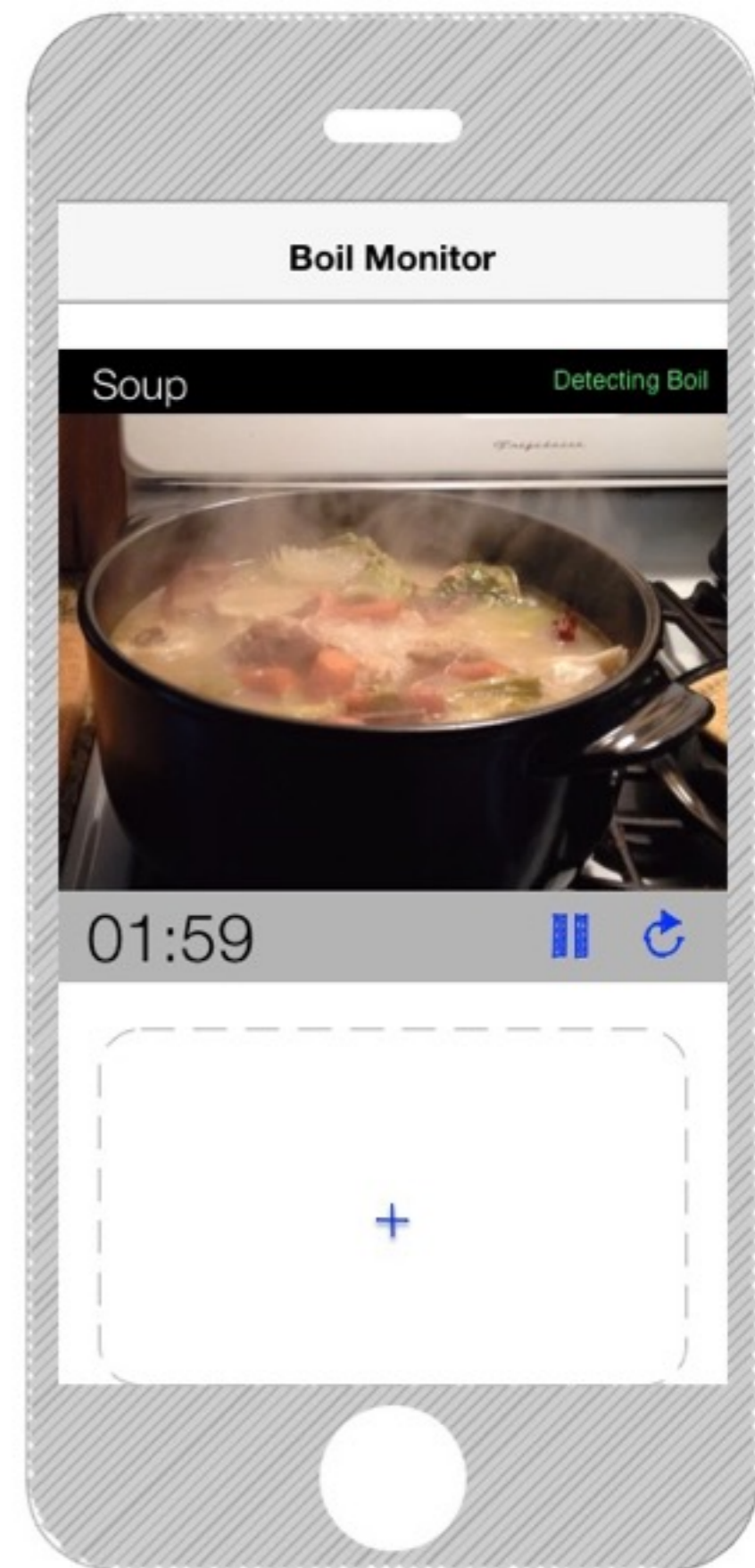
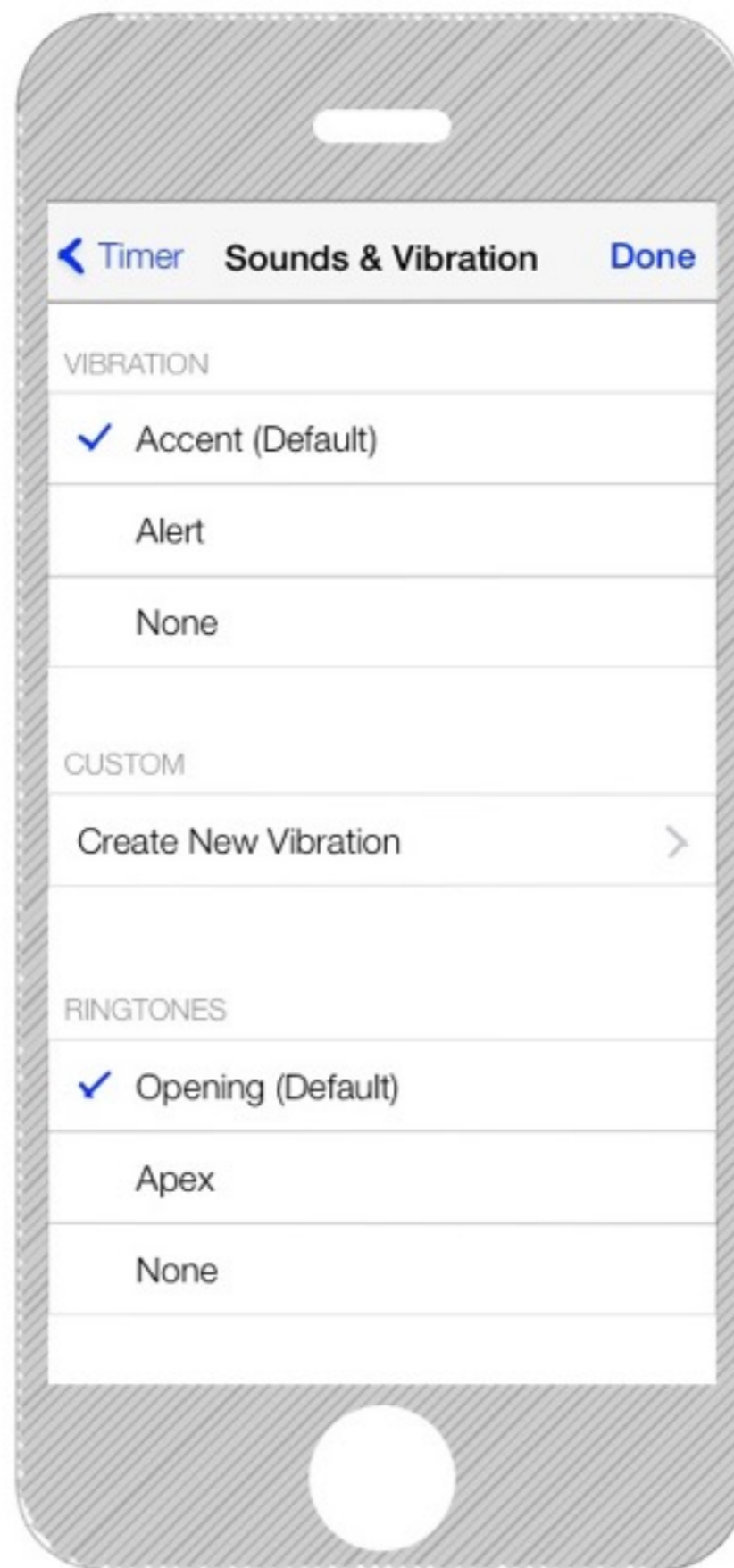
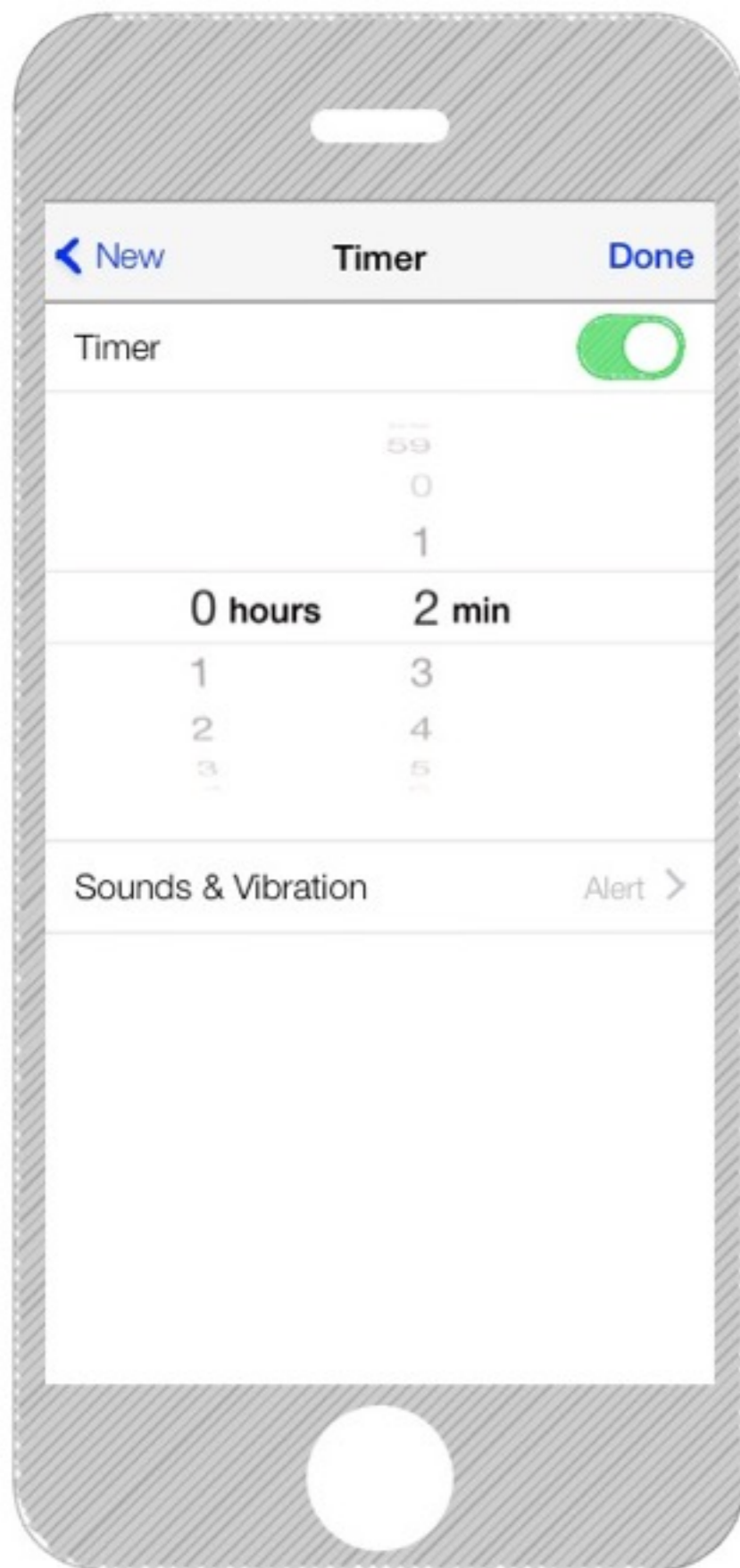
✓ Camera 1 >

Camera 2 >

Add a Camera...

PREVIEW





## Boil Monitor

Soup

Detecting Boil



00:00



## Boil Monitor

Soup

!!! BOILING !!!



01:59



Cancel

Soup

Done

Soup

Camera Source

Camera 1 >



Boil Detect



Timer

2 mins >

Delete Monitor